

VIGO RAIN SHOWER with SHELF

KF-5730 / KF-5733 VIGO shelf type rain shower

American Standard

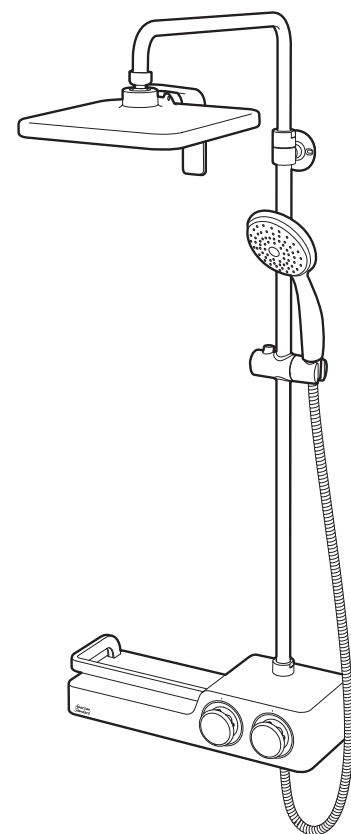
Thank you for choosing American Standard product.
For convenient installation and usage, carefully read the manual and keep the manual for product management.
The product specification may change according to the project site's conditions.

Before product installation

Make sure to completely remove foreign object in the pipe by draining the water.
From the front of the product, check if the cold water pipe is on the right side and the hot water pipe is on the left side.
If the pipes are switched, temperature control is not possible.

Conditions for the product usage

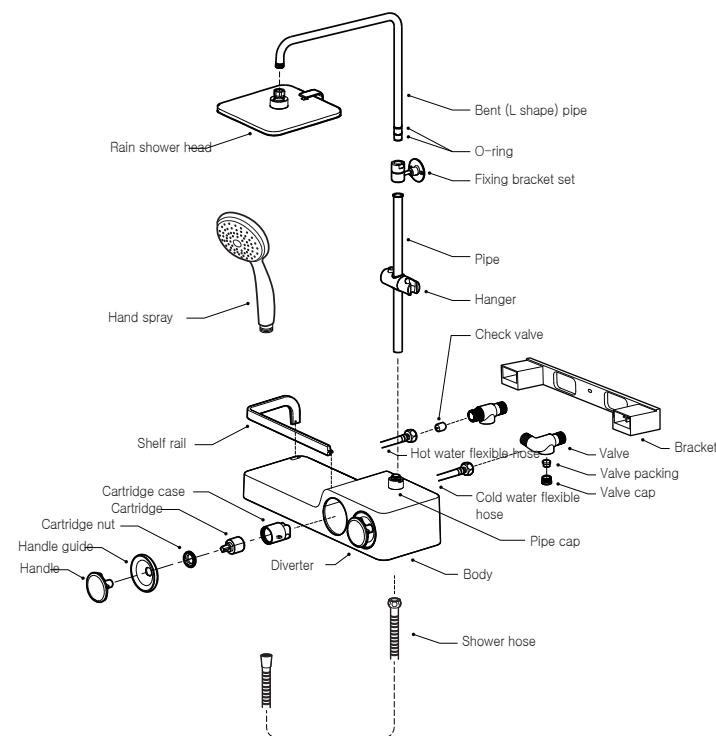
It can be normally used at the container water pressure of 2~5kgf/cm².



-1-

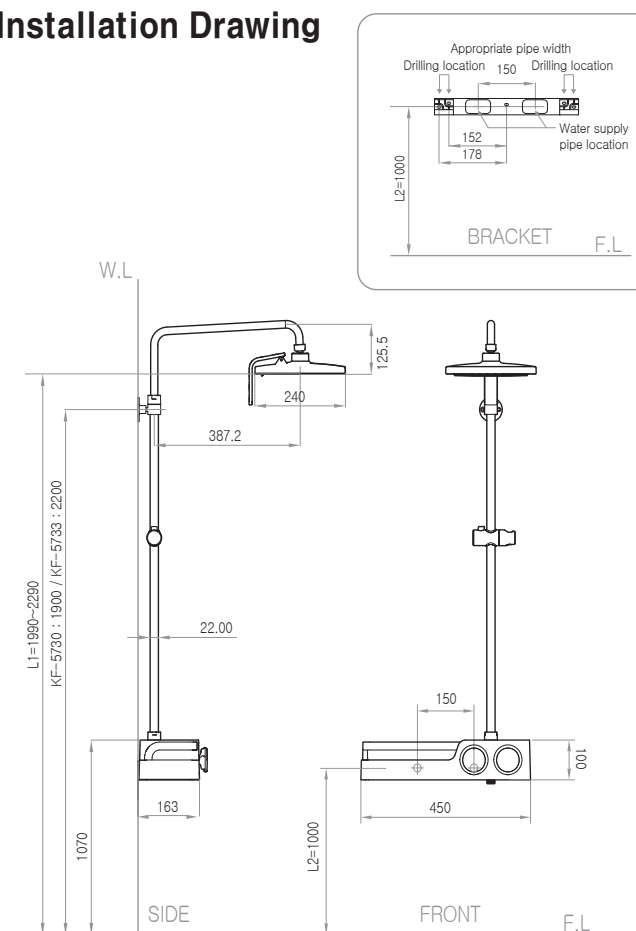
Planar Figure of the Components

Hand spray can be compatible with our other products.



* Handle part and diverter part are already assembled.

Installation Drawing



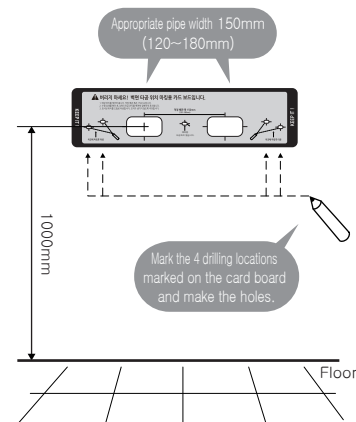
*(L1, L2): The dimensions are only for reference, so install at an adequate location considering the installation site condition and user. Adjust the bracket height according to KF-5730(810mm pipe) and KF-5733(1,100mm pipe).

-2-

1. How to Install

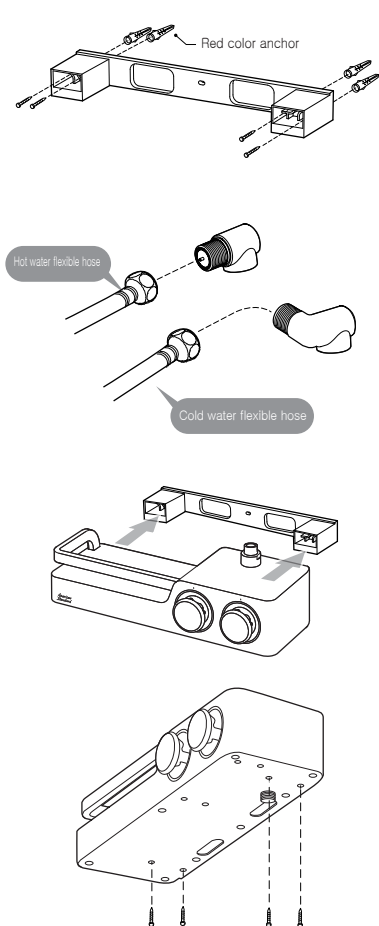
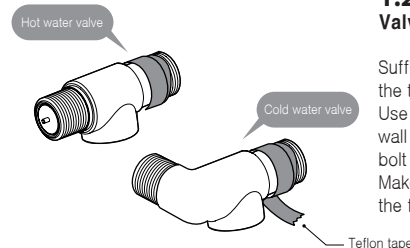
1.1 Wall side drilling

Try to match the enclosed marking card board and the designated pipe location. Appropriate pipe width is 150mm. Check the level status and mark the 4 drilling locations precisely on the wall. Use a drill to make the hole precisely on the marked location without error. (The reserved hole in the center part is used according to the installation environment, and no parts will be supplied.)



1.2 Valve installation

Sufficiently wrap the Teflon tape around the two valves to prevent water leakage. Use a spanner to install the valve on the wall while the flow amount adjustment bolt faces downward. Make the bent part to face left side as in the figure.



1.3 Bracket installation

Check the level between the already installed valve and the location of the previously drilled holes again, and install the bracket with 4 pieces of bolt so that it is not shaken. If the bracket is shaking, it may cause dangerous, so firmly tighten the pieces of bolt.

Install the valve with caution not to bend the hot water and cold water flexible hoses of the main body. If the flexible hose is bent, the water output amount may be reduced, so be careful.

1.4 Body installation

Push in the bracket according to the slot part at the back of the main body.

Fix the bracket and the main body by locking the 4 pieces of bolt at the bottom of the product.

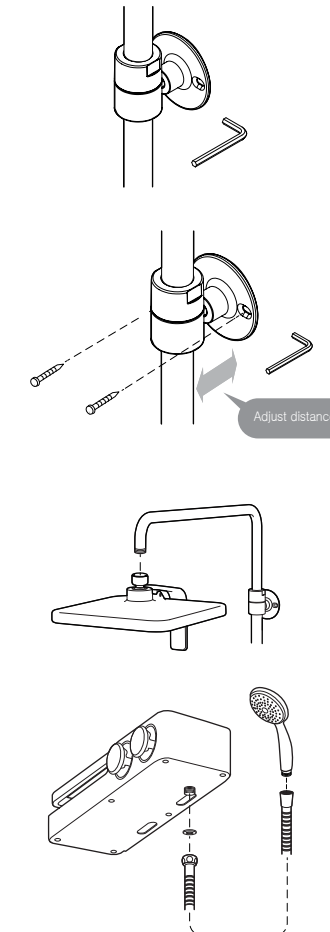
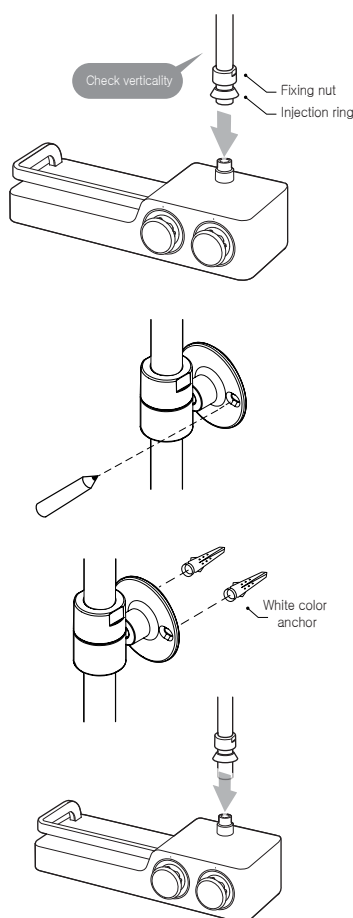
1.5 Pipe installation

Insert the pipe from top to bottom to assemble in the main body. Make sure to check verticality of the pipe with a level ruler.

After check the verticality of the pipe and mark the screw locking part of the fixing bracket with a pen.

Take out the pipe and drill holes on the marked locations, and push in the enclosed white color anchor into the drill holes.

Insert the pipe in the main body again, check the verticality, and use a tool to firmly tighten the nuts. Excessive force may cause damage of the nuts, so be careful.



Unscrew the screw set inserted in the bracket with a hexagon wrench.

Install the pipe fixing bracket with the enclosed 2 pieces of bolts. Adjust the distance between the pipe and the wall, and make sure to tighten the screw set again to fix the pipe.

1.6 Rain shower head installation

Check if packing is inserted in the rain shower head assembly part, and turn and insert the rain shower head into the bent pipe (L shape) to assemble.

1.7 Hand spray installation

Insert the packing in the nut of the shower hose. Connect the shower hose to the connection part on the bottom right of the body and connect the hand spray to the opposite side. Hand spray can be compatible with our other products.

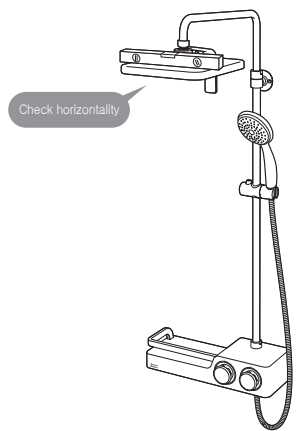
-4-

KF-5730
KF-5733

Product Warranty

The warranty period for this product is for 1 year. Even if it is within 1 year, flaw by carelessness in usage or by natural disaster, or water leakage or flaw by combination with another company's parts including non-standard parts (if the parts are not supplied by our company) will not be covered by the warranty. The damage by fault of consumers during the transportation will be repaired with charge.

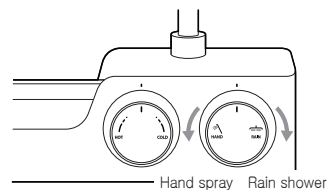
After Service 1588-5903
BATHHAUS (Show room) 1588-5906
Homepage: www.americanstandard.co.kr



1.8 Completing installation

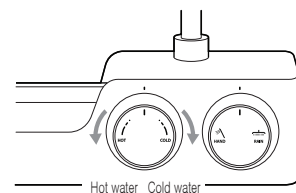
Place the hand spray on the slide hanger, and make sure to check the horizontal status of the rain shower head after the installation.

2. How to Use



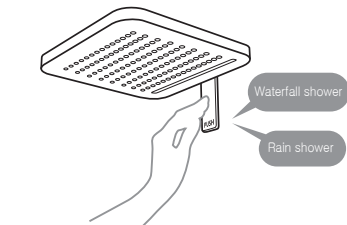
2.1 Turn on and off by diverter

When you turn the right side handle (diverter) to the left, the water comes out from hand spray, and when you turn it to the right, it is switched to the rain shower with the flow amount adjustment at the same time, and when you place the handle at the center, the water stops (OFF).



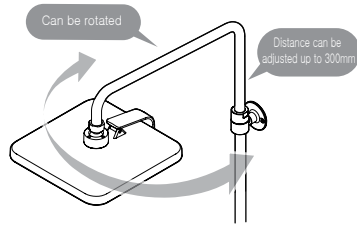
2.2 Temperature adjustment

When you turn the left side handle (cartridge) to the left, it discharges hot water, and if you turn it to the right, it discharges cold water, and when it is at the center, it is set to mixed water.



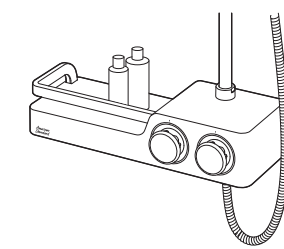
2.3 Waterfall shower and rain shower diverting

By simply pushing the switch at the back of the rain shower head, you can switch to desired shower type.



2.4 Rotation function

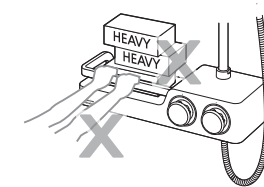
The bent pipe (L shape) can be rotated freely in any direction from left to right for convenient use. You can adjust the distance of the pipe up to 300mm according to the usage environment. After the adjustment, make sure to use a tool to firmly tighten the nut.



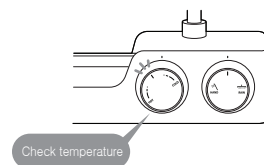
2.5 Utilizing storage function

You can place bathroom utensils of frequent use on the shelf for easy use.

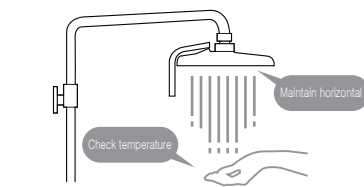
3. Cautions ⚠



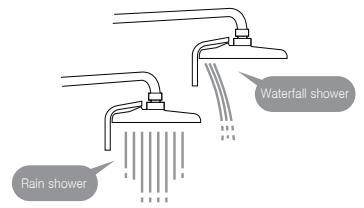
3.1
Never lean on or hang on the product. Especially, children require protection from the guardian.



3.2
If a heavy object is hung or placed on the product for a long time, product may be damaged and the main body may fall off from the wall, so be careful.



3.3
Before usage, check the position of the left handle (cartridge) to check usage temperature.



3.4
Check water temperature by hand before using the product.

3.5
Make sure to maintain the horizontal of the shower head during the installation and the usage.

3.6
Before stopping the water after using the waterfall shower, switch to the rain shower. Water will be discharged with the last switched type. Before using the product, check the water discharge type of the shower head (rain or waterfall type).

4. Maintenance ⚙

4.1
For repair
Lock the hot and cold water pipe valves at the bottom of the product before repair.

4.2
For cleaning
Toothbrush, scrubbing brush, or tough cloth will damage the resin surface, so avoid them and use soft cloth. When you use chemicals such as hydrochloric acid to wipe the tile or wall, be careful not to touch the product. Do not impose excessive force or shock to the product. It will cause malfunction.

5. Self Inspection ✓

5.1
Low flow amount
Check the main pipe valve and open the flow amount bolt sufficiently.

5.2
Water leakage
Check the cartridge nut and packing settlement status. If the nut is loose, tighten it again, and if the packing is damaged, replace the cartridge. Check the tightening status of the shower hose connection part and check whether there is packing. Check the tightening status of the pipe and connection nut, and wrap more Teflon tape or tighten the connection nut sufficiently.

5.3
Problem with water temperature
Check open/close of the hot/cold water valve's flow amount bolt. Check if the hot/cold water high flexible hoses are correctly connected to the hot/cold water valves. Check if the check valve inserted in the hot/cold water valve is deformed, damaged, or foreign object is stuck. If there is a problem with the check valve, request service to After Service.

A/S: 1588-5903
BATHHAUS (Show room): 1588-5906
Homepage: www.americanstandard.co.kr

American Standard
LIXIL GROUP

Headquarter/Factory: 355 Sinwon-ro, Danwon-gu, Ansan-si, Gyeonggi-do (Moknae-dong, Banwol Industrial Complex B3-30) Tel. (031) 508-2992 Fax. (031) 450-8708
Sales Division: 66, 112-gil, Yeongdongdaero, Gangnam-gu, Seoul (Samseong-dong, American Standard Building) Tel. 1588-5903 Fax. (02) 3485-0698, 0699